

# Community Needs Assessment



## The Community Partnership for Children: An introduction

The Community Partnership for Children (CPC) is a not-for-profit organization whose mission is to promote excellence in the care, development and educational well-being of infants/young children and their families. Since 2004, CPC has partnered with local early childhood education (ECE) providers in Grant, Luna, and Hidalgo Counties serving young children ages 0-5, to assure all young children are ready socially, educationally, nutritionally, and emotionally to succeed in school and life. This collaborative partnership, called CPC/LINKS (*Learning Network for Kids*), has led to the development of a broader coalition of partners throughout our local community. CPC's Coalition was established and is sustained through the leadership and support of CPC staff: an executive director, project coordinator, mentor/coach, and a financial administrator.



CPC/LINKS early childhood Coalition believes that access to quality, affordable ECE programs can and will support the needs of working families who are vital to our economic growth. The Coalition's purpose is to strengthen, expand, and support the business and pedagogical practices of rural, licensed ECE providers and ancillary programs. To this end, the CPC and its Coalition partners continue to engage in the following activities:

- a) share best practices, resources, and business services;
- b) build a professional learning community through cooperative professional development and required staff training;
- c) identify and solve problems unique to their business and local communities;
- d) build and strengthen local Coalition alliances through shared goals and improvement efforts;
- e) Assess and evaluate the needs of the local community to identify **actual** needs and improvement goals for early childhood education and care; and
- f) Advocate at the local, state, and national levels to improve and increase quality ECE programs, based on community assessment data.

Our Coalition partners include the following ECE providers and local organizations:

- Guadalupe Montessori School
- WNMU Early Childhood Programs
- Foy Day Care
- Let the Children Come
- El Grito Early Learning
- Silver Consolidated School District
- Cobre Consolidated School District
- Amplified Early Intervention
- Keiki Care
- Little Ones
- His Kidz
- Little Angels Day Care
- GRMC Beginning Years Home Visitation
- Workforce Development
- Grant County Health Council
- SW Council of Governments
- Imagination Library
- Family Leadership Team members

## Conducting a Community Needs Assessment

In partnership with the State of New Mexico's Early Care and Education Department (ECECD), CPC was granted funds as part of our scope of work to complete a Community Needs Assessment. Although this is a deliverable to ECECD, CPC will be distributing the assessment to the community in the upcoming months. The purpose of CPC's Coalition's Community Needs Assessment (CNA) is to identify barriers, align goals and develop a plan of action to fulfill the needs of the community.

Specifically, the CNA data will be used to:

- Build and strengthen connections between early childhood education providers and other Grant County organizations and agencies serving young children and families;
- Increase community awareness of the importance of quality early education of young children and its impact on economic development; and

- Encourage and support local professionals and paraprofessionals to understand and recognize the need for quality programming, services, and sustainability.

The CPC Coalition was eager to obtain data that would a) validate the past and current efforts of CPC and its LINKs partners to increase, support, and improve quality ECE programs, and b) initiate renewed goals and improvement activities to support families with young children in Grant County. Through the community assessment process, the Coalition identified **real, rather than perceived**, barriers and challenges related to local ECE and access to care for families and their young children. This triggered an immediate response, that would later emerge in the Coalition’s Strategic Plan, to increase family childcare home businesses and develop and support after- school programs. Although CPC had begun the assessment planning process, it was necessary to adjust goals and activities to meet *immediate* needs identified by the CNA.

### Methodology

A CNA Planning Team, identified by CPC leadership, consisted of six members representing the Coalition partners (see page one). Individuals were invited to join the team based on their prior knowledge and varied information/data about the community. In working with the Assessment Planning Team, the priorities initially recognized were as follows:

- ***Number of children under the age of 5 in need of childcare options***
- ***Large percentage of children with healthcare needs not being met***
- ***Lack of home-based childcare programs***
- ***Lack of Mental Health Services for children and families***
- ***Increased homelessness/ secure housing challenges***

**See appendix A**  
Survey Questions

The CNA team met weekly during May 2022 to discuss CNA goals, identify local, state, and national data sources, and utilized the assessment template to organize the findings. The team reviewed the data that was currently available, to prioritize indicators for the CNA. The team brainstormed data collection methods, volunteered to obtain data for specific indicators, and reported data findings at following meetings. CPC staff compiled data input from the sources mentioned above. The CNA team developed a survey, using questions related to priority indicators and identified barriers, such as the lack of available and affordable childcare services in the community.

After reviewing the tool kit and researching the local and statewide data previously collected, the team realized that these barriers existed but had not been recognized at their fullest extent across our diverse and culturally unique community. As key findings began to surface, our initial thoughts were reevaluated.

**See appendix B**  
Key Findings

***As shown in the table below, the CPC and Coalition partners gathered data from several sources to match selected indicators.***

<b>2020 Census</b>	<b>CPC White Paper</b>
<b>NM Kids Count</b>	<b>El Grito 2021 Community Assessment</b>
<b>CPC Impact Report</b>	<b>Prior CPC Grantee data: Freeport McMoran Community Investment Fund; United Way, etc.</b>
<b>The Commons</b>	<b>Workforce Development</b>
<b>SASS</b>	<b>Grant County Health Council Assessment 2012</b>
<b>NM Department of Health</b>	<b>GRMC Home Visiting Program</b>
<b>Amplified Therapy</b>	<b>Continuum of Healthcare for GC</b>

CPC developed and coached a Family Leadership Team (FLT) who participated in the survey collection across the outlying areas in the community. The FLT members were instrumental in identifying CNA survey items, developing a data collection plan, and gathering data from community members throughout the summer of 2022. There were three major events that we participated in to collect surveys and obtain testimonials from families. Some of the locations and events utilized were:

**EVENTS:**

- Jump into Summer June 18<sup>th</sup>
- 4<sup>th</sup> of July Parade
- Cobre Summer Fest June 30<sup>th</sup>

**LOCATIONS:(Silver City and Mining District)**

- Public Pool
- Free lunch locations
- Splash Park
- Public Library Time
- Community Parks
- Movie Theatre

**Community Voices**

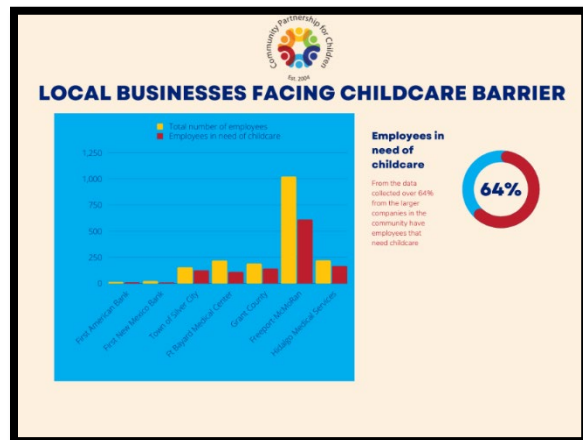
*“I am a single mom, and I got a job at the local detention center and had to quit the job, because I couldn’t find childcare, and I became unemployed.”*

Families we surveyed included, grandparents/great grandparents raising children, single parents, non-traditional, disadvantaged, and a variety of cultural/ethnic families which reflect Grant County’s population. These families were able to speak freely and anonymously to share their opinions and perceptions related to the survey questions. Out of the 272 surveys collected we were able to gather **important** anecdotal information which was also gathered from families and used to guide the Coalitions CNA focus. This qualitative data revealed very specific childcare challenges that will assist the Coalition in identifying, developing, and meeting goals to improve the **real** barriers faced by families in our communities.

CPC also developed a survey for local business owners to further identify specific needs of employees related to childcare. The Coalition knew it was important to gather this data in the CNA report to address the impact of the lack of childcare for families on the local workforce affecting economic development.

**Findings**

Major findings (included in parent testimonials) from the CNA led the Coalition to



identify **three priority areas of need** for families in our local community. This was a slight shift in our initial thoughts on what our priorities were. The priorities, listed below, will be the focus of future directions for the Coalition, including the development and implementation of a Strategic Plan.

**The three priority areas of need that emerged from our CNA data and are as follows:**

**Priority One: Access to affordable before- and after-school and summer programs.** CNA data shows 94% (N=153) of families who need care for their children after school, 82% (N=153) during school breaks, early release days, and during summer months (see Appendix C). Parents expressed a need to have available and dependable childcare to serve their children before, during, and after daycare, school, and work. This is a **significant** need for working parents who have children up to age 12; and for parents who want to work but cannot due to childcare barriers. We were able to reach out to 7 of the major employers in our community and found that 64% of their employees were in need of childcare. They expressed the loss of GREAT employees due to this barrier.

**Community Voices**  
*"I don't know how I am going to continue working after reviewing the new Silver School Calendar! After looking at it I have no childcare for EVERY Wednesday afternoon and will have to leave work early!"*

**See appendix D**  
Local businesses facing childcare barrier

**Priority Two: Access to affordable home-based childcare programs for infants and toddlers.** Data shows that there is a lack of affordable, quality childcare options for infants and toddlers in our local community, with many existing programs carrying a waiting list of children in need of services (see appendix E). The development of small, home-based childcare programs would fill the need of childcare in our rural community (see Appendix F).

**Priority Three: Ongoing support for ECE programs, including home-based childcare, or center-based locations through instructional assistance and support.** Research shows that job-embedded support, coaching, and mentoring can have a positive impact on adult, child learning and other child development outcomes. The awareness and use of available, free programs such as **Elevate New Mexico** can provide a lifeline for ECE childcare programs as they seek to develop, organize, and improve business and pedagogical practices. **Elevate New Mexico** provides access to free business coaching, childcare management software, and community coaching to help streamline time-consuming business tasks.

**Community Voices**  
*"My husband and I decided to start our family in 2018. I was working as a vet tech at one of our local vet clinics and I made decent money for our area. My job started at 7:45 and ended at 5:30 (if I was lucky). There's not a daycare that has hours like that."*

**The next steps to address CNA priorities are as follows:**

**Priority One**, the CPC Coalition has entered a partnership with community leaders to create a pilot after-school program for children ages 6-12, and in the future phasing into expanded services for children ages 0-5. The program will be housed in the Silver Consolidated Schools



Stout Elementary and WNMU Early Childhood Programs will serve as the licensed fiscal agent for the program. The Town of Silver City has agreed to fund the program for the first year, and the Southwest Council of Governments (COG) will fund CPC to facilitate and provide support and training in the development of the program. A Memorandum of Understanding (MOU) has been developed between all partners, effective Fall of 2022.

The CPC Coalition will focus on CNA **Priority Two** by collaborating and developing a simplified process to expand home-based childcare businesses in our local community. The Small Business Development Center, COG, and Growing Up NM will be partners to support new home-based programs in developing business plans, identifying resources, and exploring options for available funding.



*A visit with two grandparents looking to start a business in Home-Based Childcare*

**Priority Three** will be addressed through the continuation of instructional support, resources, and coaching currently being provided by CPC staff in collaboration with our LINKS partners and other Coalition members (see *Coalition Purpose and Goals* on page 1). Focused attention will be given to new home-based programs to assist them as they develop their businesses and increase high-quality childcare services.

### Conclusion

After completing the CNA and growing the FLT team, CPC has identified several barriers with an immediate need in support of the three priorities. In addressing the identified barriers effort will be focused to drive the strategic plan. The next steps as a coalition are to identify policy changes at the local, regional, state, and federal levels that need to be addressed. The steps we had to take to complete this assessment process brought forth strengthening relationships with community leaders, LINKS Partners, the Family Leadership Team, which enhanced the knowledge/growth of the CPC Coalition.

### Acknowledgements

CPC would like to express appreciation and recognize the community leaders who are always willing to engage and collaborate to meet the unique needs of our rural community. They have contributed valuable time, resources, and support toward the important work of improving the lives of families and children.

Thanks to the Early Childhood Education and Care Department for their vision and support of statewide coalitions and their recognition of the importance of empowering communities to make a difference for the unique and diverse areas throughout this state.

The CPC Coalition also recognizes the invaluable support of the UNM Family Development Team along with the Policy Equity Group, through trainings, guidance, and encouragement. Their guidance helped create an avenue to unlock barriers and move forward the funded Coalitions in supporting their communities.

## **Appendix A** **[Community Partnership for Children August 29, 2022]** **Initial Survey Questions**

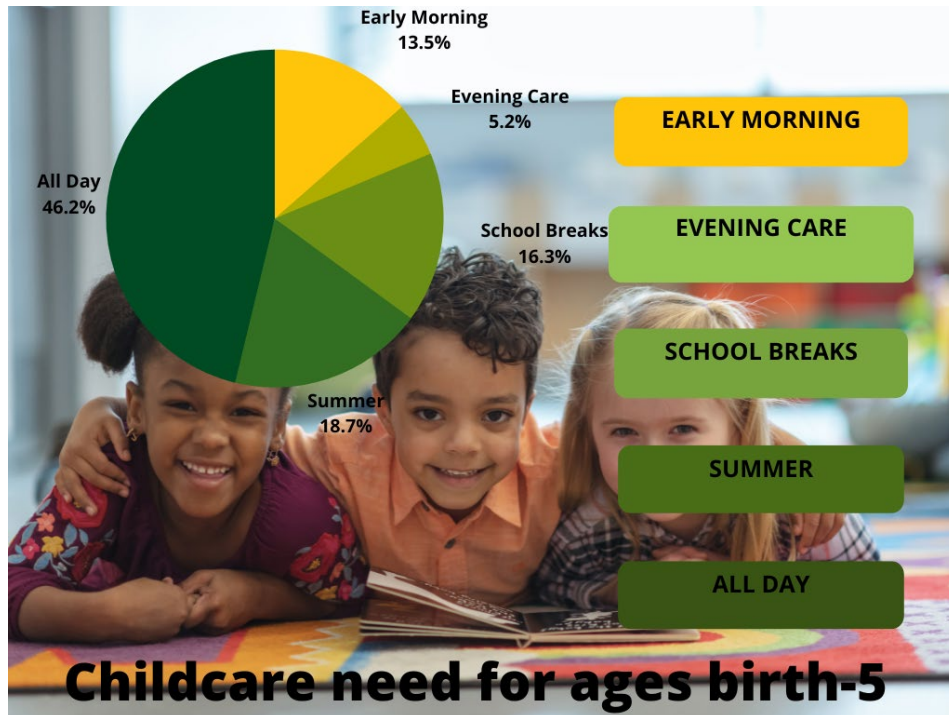
1. Do you currently receive **TANF (state income assistance)** benefits?
  - Yes
  - No
2. Is anyone in your **household** currently **unemployed**?
  - Yes
  - No
3. Do you have **children** in the home **age 5 or younger**?
  - Yes
  - No
4. How many children under 5 are in the home?
  - 1
  - 2
  - 3
5. Other \_\_\_\_\_
6. Are any of the children in your home in need of special healthcare services?
  - Yes
  - No
7. If yes what type?
  - Dental
  - Pediatrician (family doctor)
  - Early Intervention (help walking, talking, etc.)
  - Health Services
8. Are you a grandparent raising a **child/children**?
  - Yes
  - No
9. Are you a single **parent**, raising a **child/children**?
  - Yes
  - No
10. If you were in **need of childcare**, where would you go to **find it**?
  - Family or Friends
  - Facebook
  - NM Kids
  - Google
  - I don't know
11. What **hours** daycare do **you need**?
  - All day
  - Early Morning
  - Evening
  - Summer
  - School Breaks

## **Appendix B**

**[Community Partnership for Children August 29, 2022]  
Key Findings**

<i>Priority</i>	<i>Key Findings</i>
<b>Demographic, cultural, and social indicators</b>	<ul style="list-style-type: none"> <li>● <i>Number of children under age 5 needing childcare services</i></li> <li>● <i>Number of grandparents raising grandchildren</i></li> </ul>
<b>Health indicators</b>	<ul style="list-style-type: none"> <li>● <i>Number of children lacking healthcare resources and services</i></li> <li>● <i>Number of families in need of mental health services</i></li> </ul>
<b>Inventory of ECECD Home Visiting and Early Learning Programs</b>	<ul style="list-style-type: none"> <li>● <i>The need to strengthen communication between Home Visiting/Early Learning programs</i></li> <li>● <i>Increase numbers of families participating in Home Visiting/Early Learning programs</i></li> </ul>
<b>Inventory of other early childhood programs and services</b>	<ul style="list-style-type: none"> <li>● <i>Center based childcare lacks expanded hours for working families</i></li> <li>● <i>Lack of homebased childcare in the community</i></li> </ul>
<b>Other</b>	<ul style="list-style-type: none"> <li>● <i>Decrease the amount of homelessness in the community</i></li> <li>● <i>Increase the amount of housing in the community</i></li> </ul>

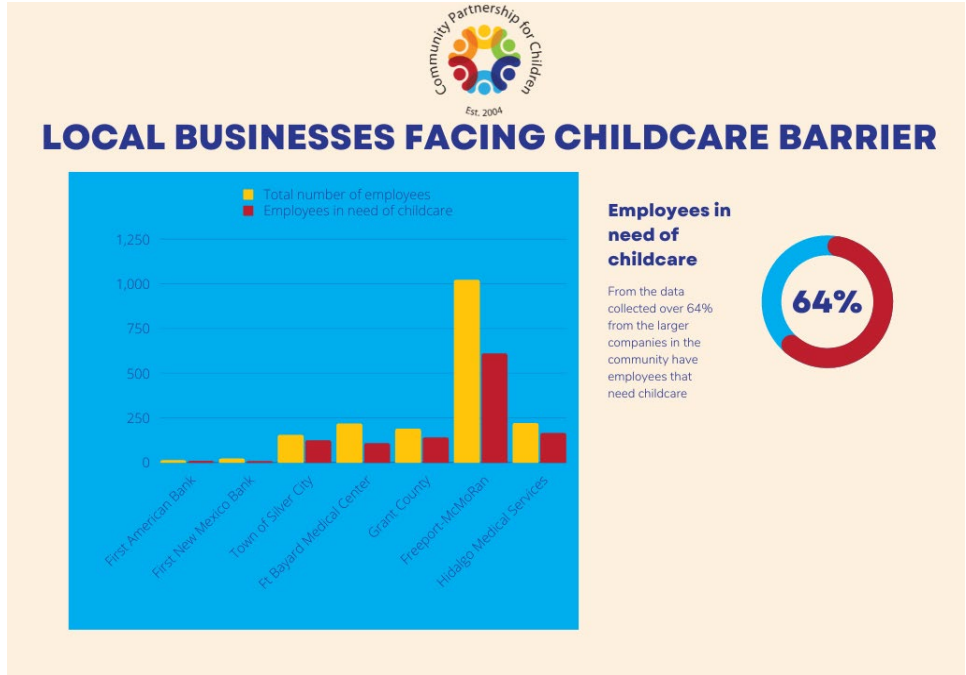
**Appendix C  
[Community Partnership for Children August 29, 2022]  
Childcare need**



**Appendix D**



[Community Partnership for Children August 29, 2022]  
Local Businesses



Appendix E  
[Community Partnership for Children August 29, 2022]  
Lack of infant toddler care



Appendix F

**[Community Partnership for Children August 29, 2022]  
All Data**

<b>Indicator</b>	<b>Number or %</b>	<b>Data Source</b>	<b>Data Date</b>
<b>I. Demographic, Cultural and Social Indicators</b>			
Number of Children Under Age 5	183 (N=272)	Grant County CPC Survey	August 2022
Percent of Families with Children Under Age 5	39% (N=272)	Grant County CPC Survey	August 2022
Percent of Families with Children Under Age 5 Living in Poverty	24% (N=272)	Grant County CPC Survey	August 2022
Percent of Families Experiencing Unemployment	16% (N=272)	Grant County CPC Survey	August 2022
Percent of Grandparent(s) Raising Children Under Age 5	7% (N=272)	Grant County CPC Survey	August 2022
Percent of Single Adult Households Raising Children Under Age 5	20% (N=272)	Grant County CPC Survey	August 2022
<b>Indicator</b>	<b>Number or %</b>	<b>Data Source</b>	<b>Data Date</b>
<b>II. Health Indicators</b>			
Percent of Children Under Age 5 with Special Healthcare Needs	18% (N=272)	Grant County CPC Survey	August 2022
<b>ECECD Programs and Services</b>	<b>List of Programs</b>		<b>Total Number of Children Served</b>
<b>III. Inventory of ECECD Home Visiting and Early Learning Programs</b>			
Early Head Start: Center Based	<i>El Grito, El Grito De Bosque, Cliff, Calvary</i>		16,12,12,12 <b>Total: 52</b>
Head Start	<i>El Grito</i>		110
ECECD Early Pre-K	<i>WNMU CDC, G. Montessori, Cobre, Silver Scholars, Growing Tree</i>		72,12,65,54,3 <b>Total:206</b>
ECECD Pre-K	<i>WNMU CDC</i>		72
ECECD Home Visiting Programs	<i>Beginning Years, El Grito Early Learning</i>		160
ECECD Licensed Child Care Programs	<i>Lil' ones, Keiki Care, Grandma Lu's, Itsy Bitsy</i>		8,8,12,12 <b>Total: 40</b>
ECECD Registered Family Child Care Homes	<i>Unknown</i>		14 programs total
ECECD Early Intervention Services	<i>Amplified Therapy</i>		126
<b>Other Early Childhood Programs and Services</b>	<b>List of Programs</b>		<b>Total Number of programs</b>
<b>IV. Inventory of Other Early Childhood Programs and Services</b>			
Mental Health Services for Children and Families	<i>Cobre, Winborn, El Refugio, HMS, Tu Casa, Border Area, Silver Schools, WNMU Family Counseling Center</i>		9
DOH WIC Programs	<i>DOH</i>		1
Pediatric Practices	<i>GRMC Pediatricians</i>		2
Birthing Hospitals	<i>La Clinica</i>		1
Breastfeeding Support and Services	<i>Beginning Years</i>		1